

RSO single seal

COMPACT CARTRIDGE SEAL FAMILY

Description

Type RSO is a very compact, general purpose, cartridge single mechanical seal designed to seal a wide range of fluids, including fluids with solids.

RDU/RSO seals show best performance at:

- Liquor pumps at pulp and paper industry
- Stock pumps at pulp and paper industry
- Chemical pumps at various industries
- Water with abrasive particles pumps

Materials	
Seal faces	Selsintered silicon carbide, tungsten carbide, carbon graphite, Trembide 85, Trembide 50
Secondary seals	EPDM, fluoroelastomer, perfluoroelastomer, and others
Springs	Hastelloy® C
Metal parts	ss316, ss304, Titan, and others

Advantages

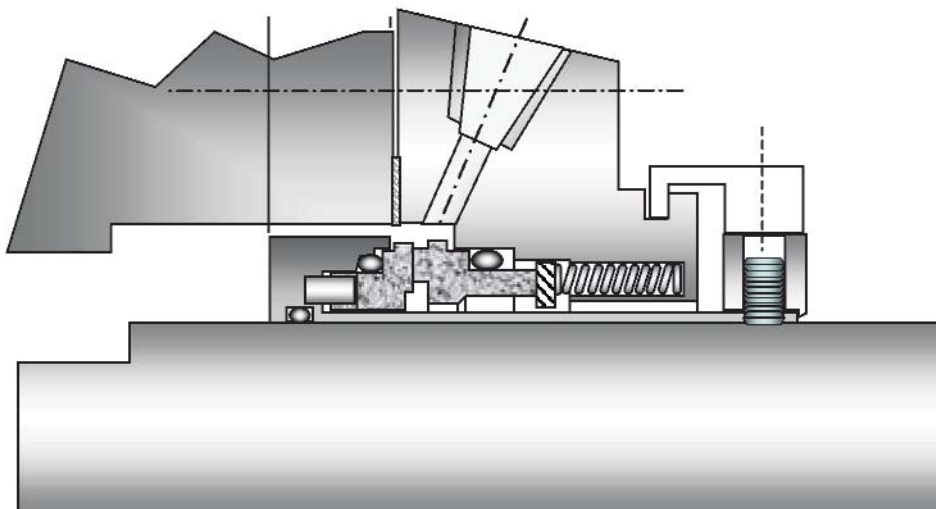
- Type RSO cartridge single mechanical seal has a compact but sturdy design. Good performance, long MTBF, and safety are ensured by:
 - optimal balance of the seal;
 - self aligning stationary seal ring to compensate for seal chamber face runout;
 - finite element analysis optimized seal rings to minimize deformation and emissions.
- Springs are made of Hastelloy® C to prevent corrosion cracking.
- Being a very compact seal, Type RSO can be used on most pumps, mixers and other equipment with limited space seal chambers, including those with mechanical packing.
- Special design is available to seal shafts of pumps series EPP and APP.

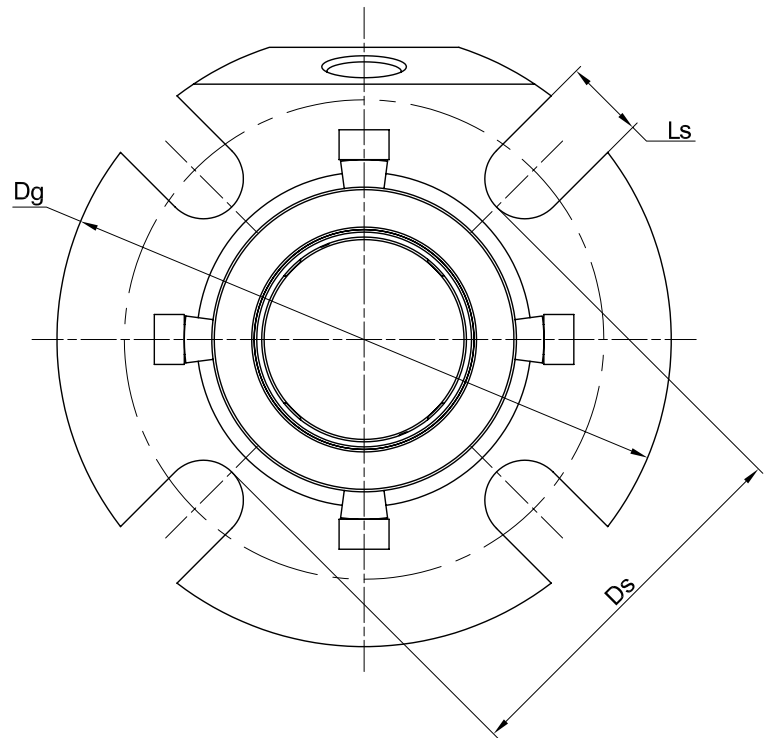
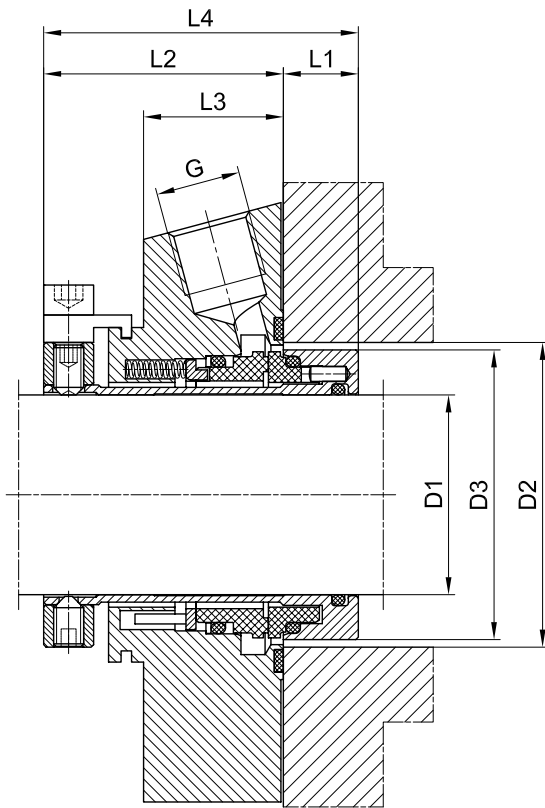
Technical data	
Temperature	From -40 up to +260 °C
Dynamic Pressure	Up to 25 bar
Static pressure	Up to 60 bar
Speed	Up to 25 m/s

Recommended API Plans for RSO seals

API Plan (per API 682)	Description	Application guidelines
11	Recirculation from pump discharge through a flow control orifice to the seal.	Flashing / boiling fluids.
32	Flush is injected into the seal chamber from an external source.	Fluids with solids. Fluids changing state. Typical for pulp and paper industry.

RSO mechanical seal





D1	D2min	D2max	D3	Dg	Ds	L1	L2	L3	L4	Ls	G
22	40	48	38	105	56	15	48	28	63	14	1/4
25	44	51	43	105	58	15	48	28	63	14	1/4
26	44	51	43	105	58	15	48	28	63	14	1/4
28	47	52	46	105	58	15	48	28	63	14	1/4
30	49	56	48	105	65	15	48	28	63	14	1/4
32	51	57	49,8	105	65	15	48	28	63	14	1/4
33	51	57	49,8	110	67	15	48	28	63	14	1/4
35	54	62	53	113	67	15	48	28	63	14	3/8
38	57	66	56	123	70	15	48	28	63	14	3/8
40	59	69	58	123	75	15	48	28	63	16	3/8
43	61,5	70,5	60,5	130	80	15	48	28	63	16	3/8
45	64	73	62,5	130	80	15	48	28	63	16	3/8
48	67	75	65,6	138	84	15	48	28	63	16	3/8
50	69	78	68	142	87	15	48	28	63	16	3/8
53	73	87	72	147	97	15	48	28	63	18	3/8
55	74	83	73	147	97	15	48	28	63	18	3/8
60	79	91	78	157	102	15	48	28	63	18	3/8
65	84,5	99	83	163	109	15	48	28	63	18	3/8
70	95	108	93	170	118	18	56	32	74	18	3/8
75	100	119	98	190	129	18	56	32	74	18	3/8
80	107	124	105	195	135	18	56	32	74	18	3/8
85	112	128	110	200	139	18	56	32	74	22	3/8
90	117	135	115	205	145	18	56	32	74	22	3/8
95	120,7	137	119	210	148	18	56	32	74	22	3/8
100	127	144	125,4	218	154	18	56	32	74	22	3/8