

SO-3 BARRIER FLUID TANK FOR DUAL MECHANICAL SEALS

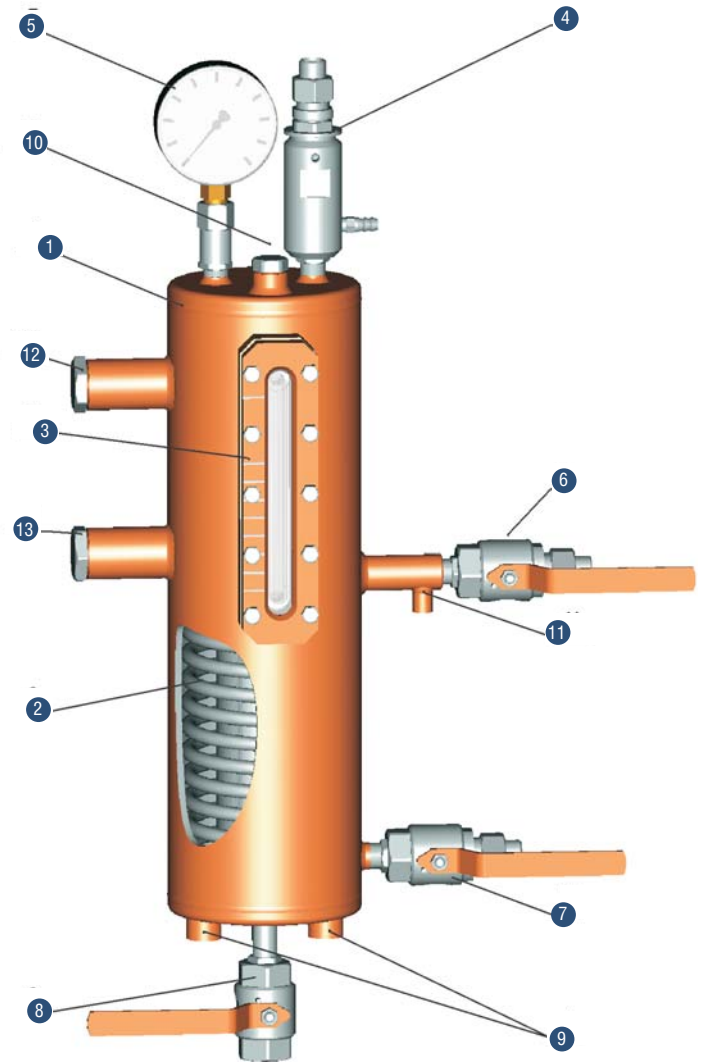
The SO-3 barrier fluid tank is designed to contain barrier fluid for a tandem or double mechanical seal, to provide its cooling and to control mechanical seal performance. The SO-3 barrier fluid tank can be used with API Plans 52 or 53 as per API682.

Technical data	
Heat exchanger type - spiral tube, vertical	
Metal parts material - SS321H	
Gaskets - flexible graphite	
Barrier fluid volume, l	9
Barrier fluid pressure bar, max	45
Barrier fluid temperature, max	150
Cooling liquid (water, diesel, glycol) temperature	5...30 °C
Cooling water flow rate, m ³ /hour	0,3...1,2
Weight, kg	25

Design features

1. The design is to be used as standard for majority applications
2. The system can be fitted with instrumentation and control for automatic checking of mechanical seal performance and pump shut-down in case of mechanical seal failure. The instrumentation and control version of SO-3 can additionally include a level sensor, a pressure switch, and a temperature sensor. Sensors and switches are either intrinsically safe or explosion proof depending on customer's order

Possible switches configuration	K0	K1	K2	K3	K4
Manometer	■	■	■	■	■
Safety valve	■	■	■	■	■
Ball valves (3 pcs)	■	■	■	■	■
Level switch	■	■	■	■	■
Pressure switch	■	■	■	■	■
Manometer pressure switch	■	■	■	■	■



- 1 - Reservoir
- 2 - Cooling coil
- 3 - Level indicator
- 4 - Safety valve/vent
- 5 - Pressure indicator
- 6 - Barrier fluid return
- 7 - Barrier fluid supply
- 8 - Drain/pressure fill
- 9 - Cooling liquid IN/OUT
- 10 - Fill connection/nitrogen if specified
- 11 -Temperature switch connection
- 12 - Pressure or high level switch connector
- 13 - Low level switch connection